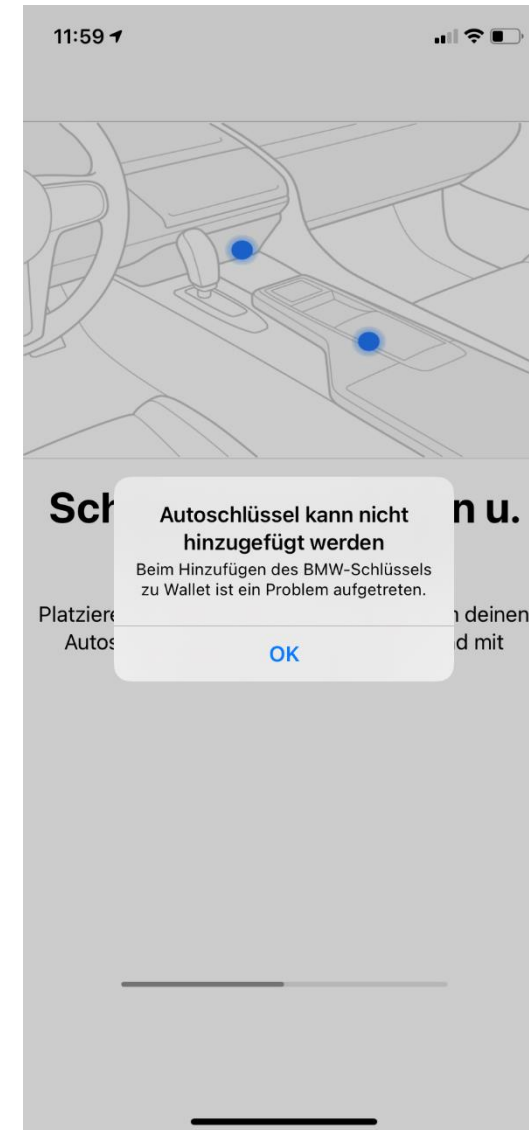
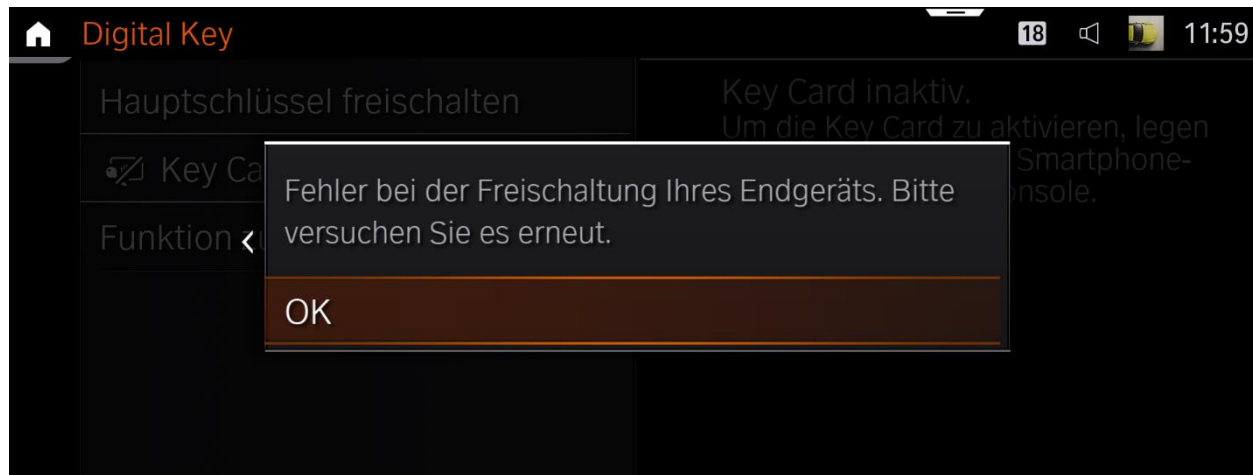


Pic 1

Anzeige im iPhone

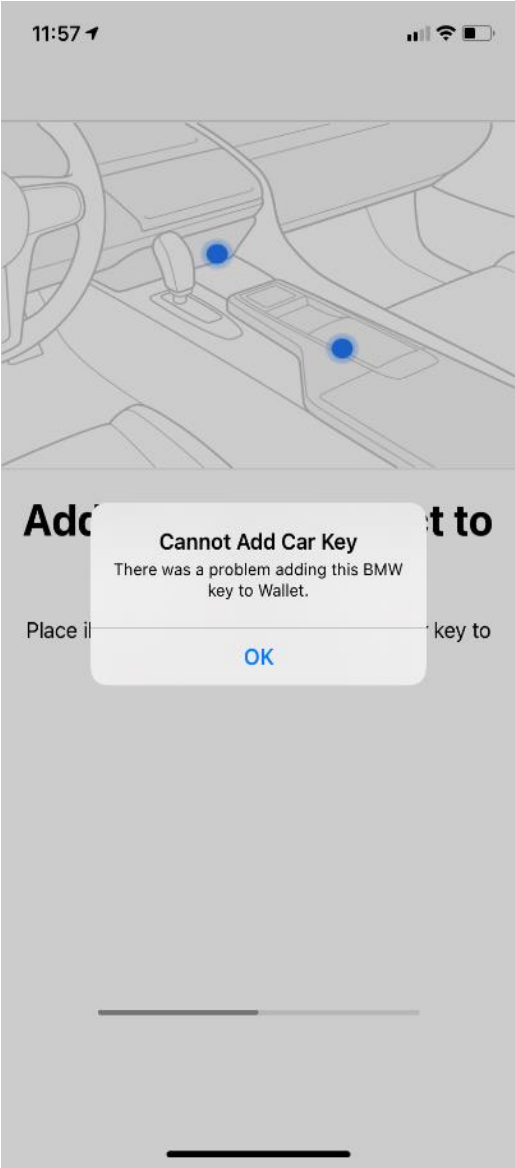
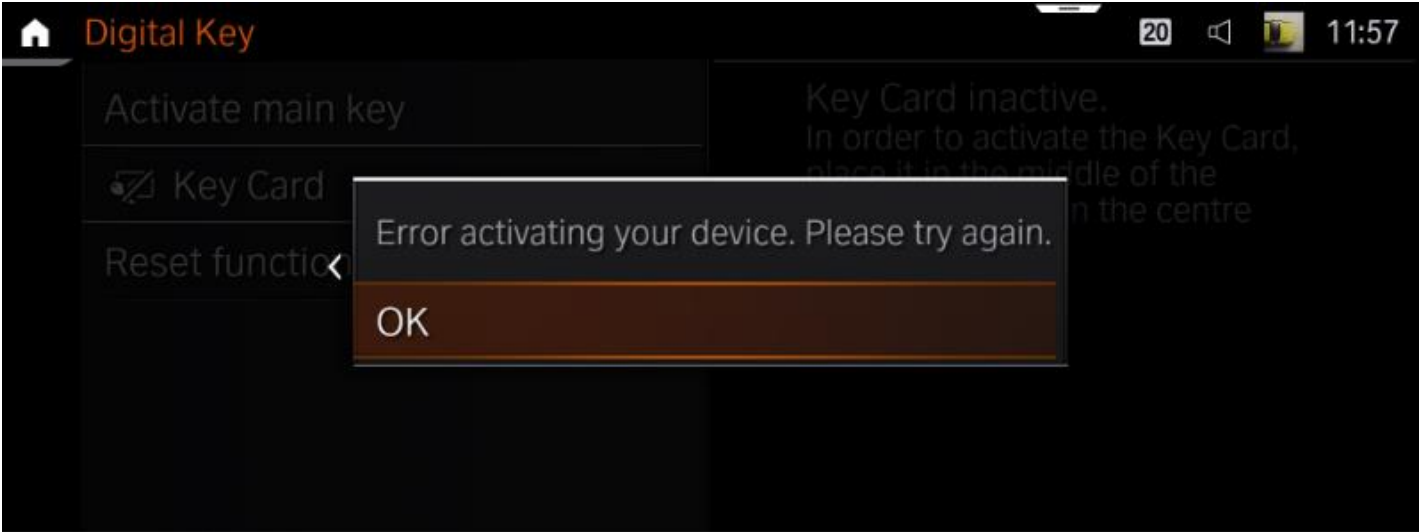
Anzeige im Fahrzeug:



Pic 2

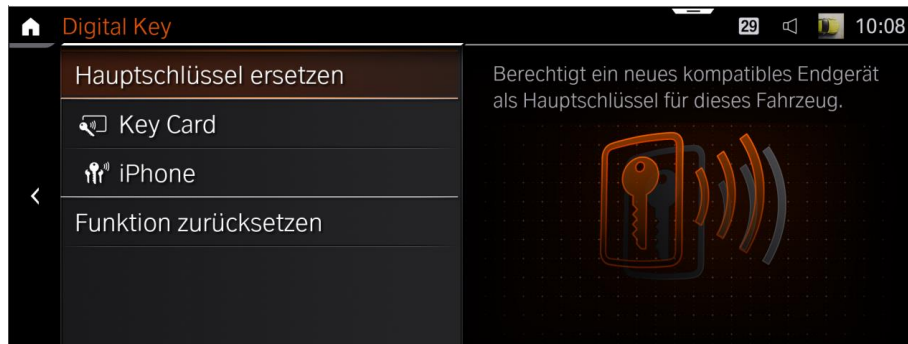
Smartphone error message:

Vehicle error message:



Pic 3

Einstellungen -> Türen /Fahrzeugzugang ->
Digital Key – Funktion zurücksetzen



Pic 4

Use "Reset Feature" button in HMI and re-try
owner pairing.

